



ELEVATION FROM 40TH AVENUE TO 40TH STREET

BACKYARDS OF THE BULGLOW BUILDINGS



NEIGHBORHOOD CHARACTER IMAGES



ELEVATION FROM 40TH STREET TO 41ST AVENUE

CROSSWALKS--PREST BRICK



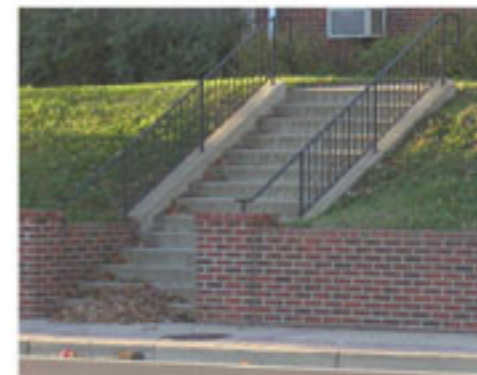
BRIDGE WITH RAILING



BUILDING FACADE--
RED BRICK



WALL AND STAIRCASE



SIDEWALK PAVING



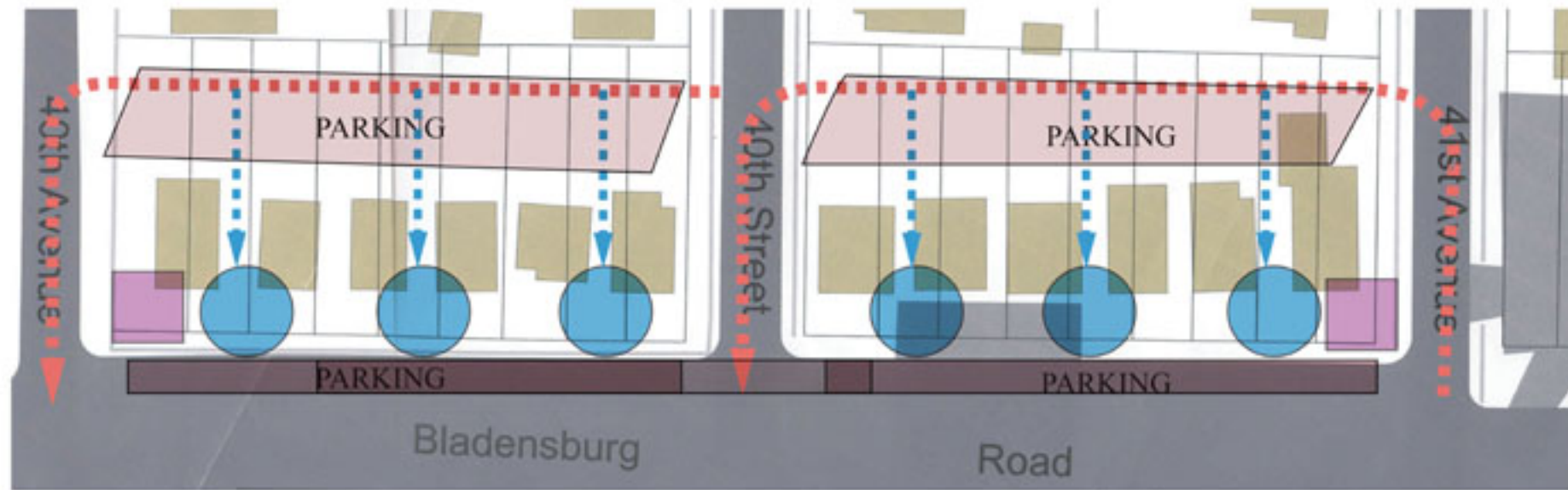
CONCEPT:

--THE ESSENCE OF PUBLIC SPACE:

SHARED AND INTERACTIVE, VISUALLY AND FUNCTIONALLY

--SPACE PROVIDED FOR EMPLOYEES, AS WELL AS ADA ACCESSIBLE

--A DISTINCT ENTRY FEATURE BY INCORPORATING THE LOCAL LANDSCAPE CHARACTER

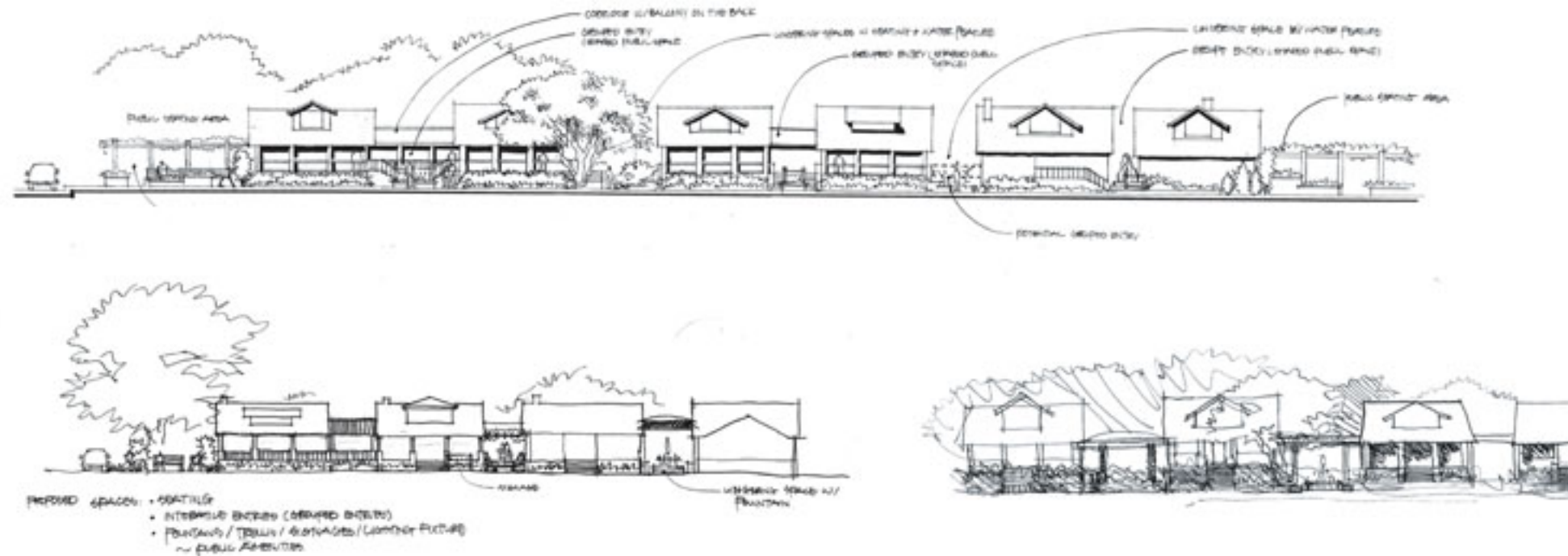


VEHICULAR CIRCULATION

PEDESTRIAN CIRCULATION

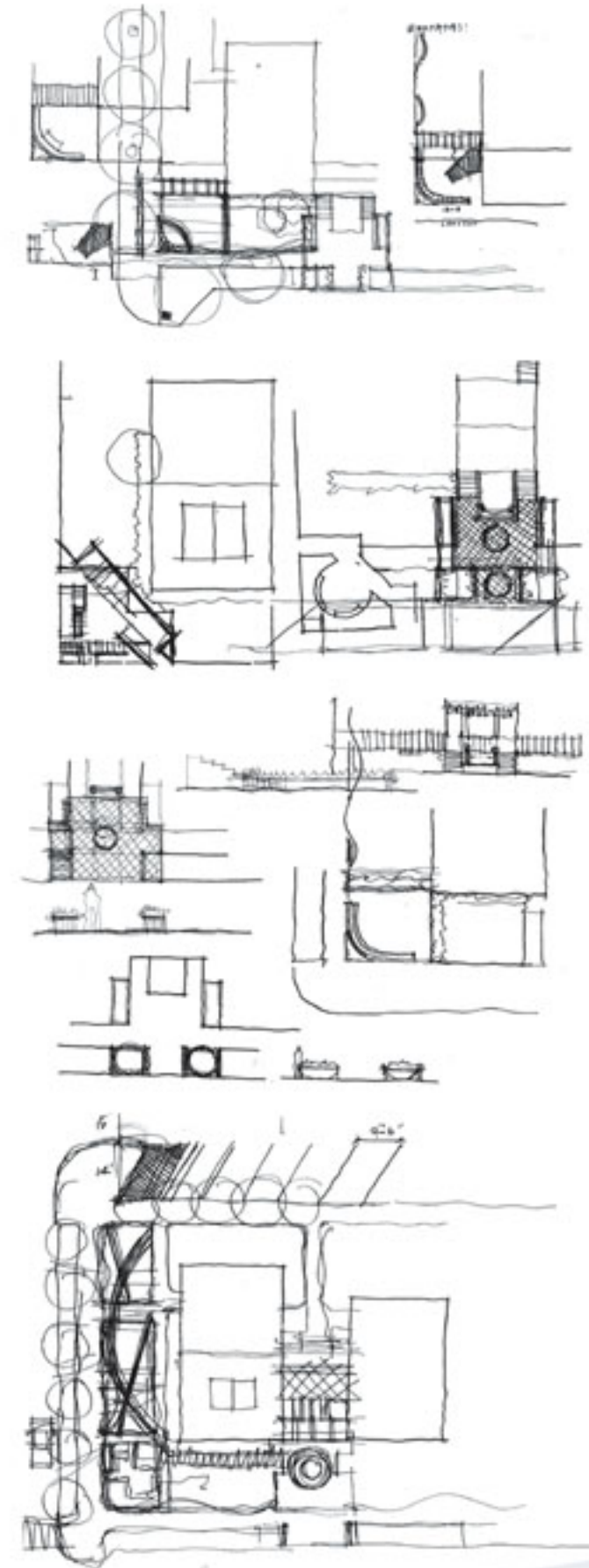
BUILDING ENTRY

INTIMATE PLAZA



EARLY CONCEPT ELEVATIONS

EARLY CONCEPT PLANS



EDSA

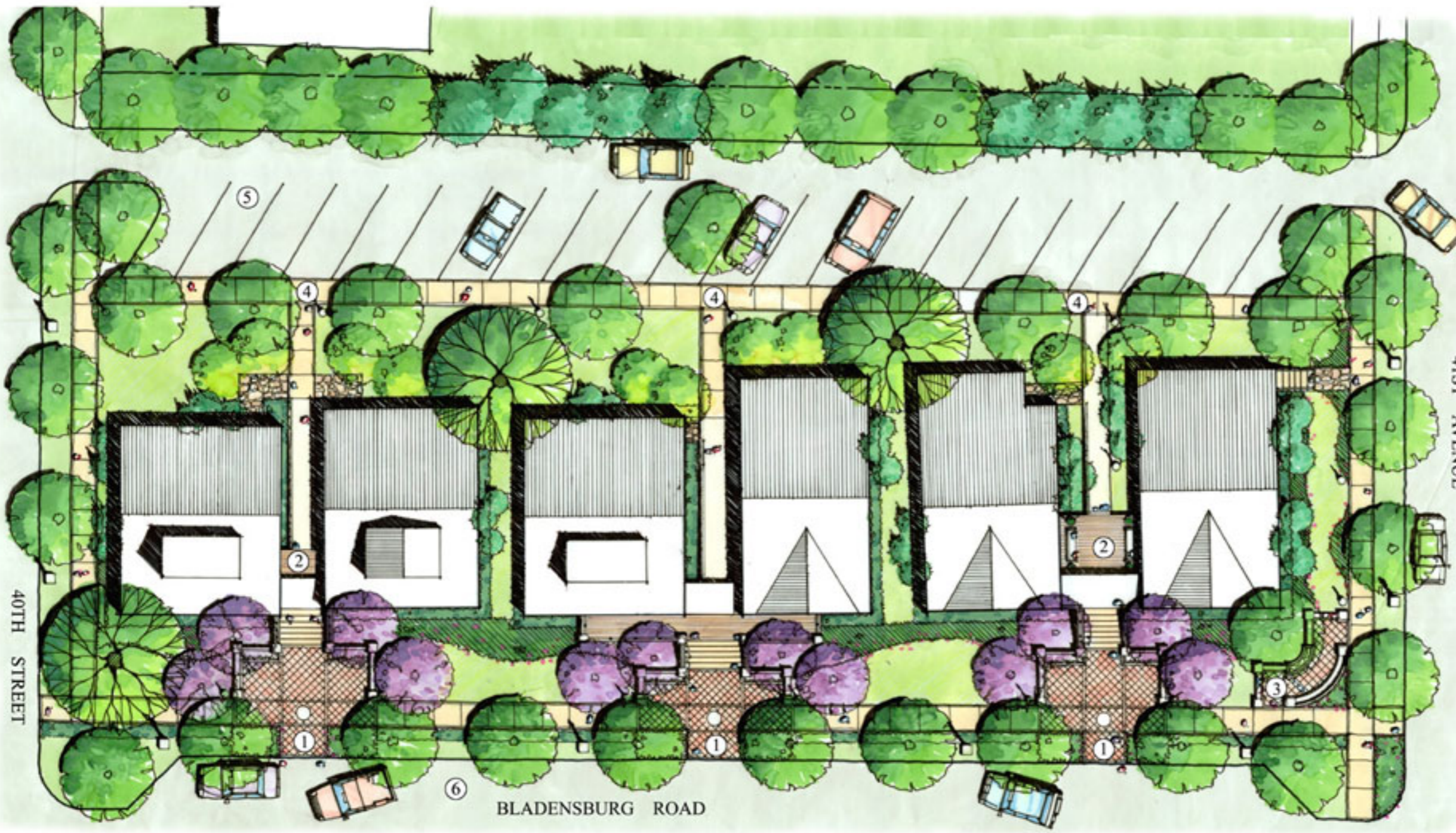
planning landscape architecture urban design graphic design

Cottage City



Potential Commercial Facade Improvement Project

The Neighborhood Design Center for Port Towns, by Qiaoju Yu



- LEGEND**
- ① Building Main Entry
 - ② Outdoor Patio/Cafe
 - ③ Commercial Street Signage W/Intimate Plaza
 - ④ ADA Entry from Backyards
 - ⑤ Parking Lot (21 Spaces)
 - ⑥ Parallel Parking (8 Spaces)

PLAN OF BLOCK FROM 40TH STREET TO 41ST AVENUE



ELEVATION OF BLOCK FROM 40TH STREET TO 41ST AVENUE





- LEGEND**
- ① Building Main Entry
 - ② Outdoor Patio/Cafe
 - ③ Commercial Street Signage W/Intimate Plaza
 - ④ ADA Entry from Backyards
 - ⑤ Parking Lot (20 Spaces)
 - ⑥ Parallel Parking (8 Spaces)

PLAN OF BLOCK FROM 40TH AVENUE TO 40TH STREET



ELEVATION OF BLOCK FROM 40TH AVENUE TO 40TH STREET





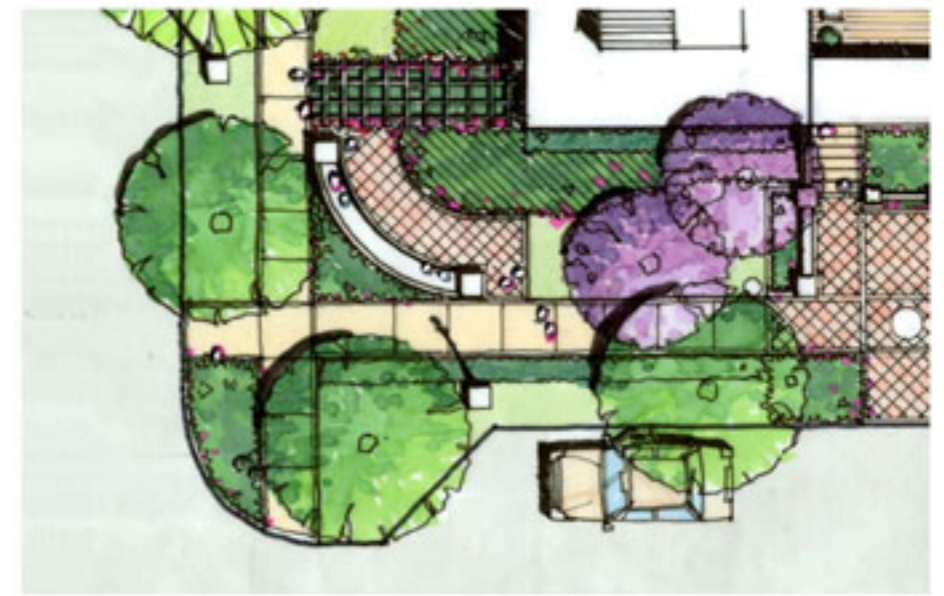
BANNER OPTION 1



BANNER OPTION 2



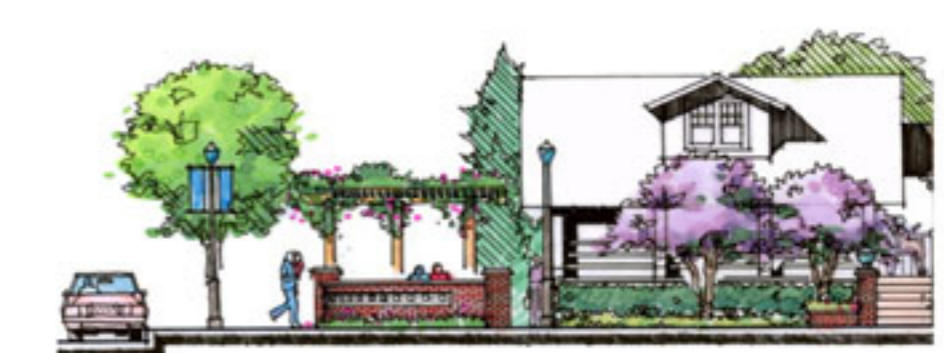
PLAN OF ENTRY SIGNAGE FROM 41ST AVENUE



PLAN OF ENTRY SIGNAGE FROM 40TH AVENUE



ELEVATION OF ENTRY SIGNAGE FROM 41ST AVENUE



ELEVATION OF ENTRY SIGNAGE FROM 40TH AVENUE



PLAN OF TYPICAL BUILDING ENTRY W/PATIO



ELEVATION OF TYPICAL BUILDING ENTRY

